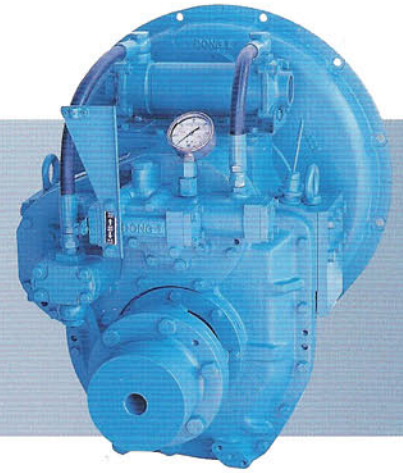


D-I MARINE TRANSMISSION

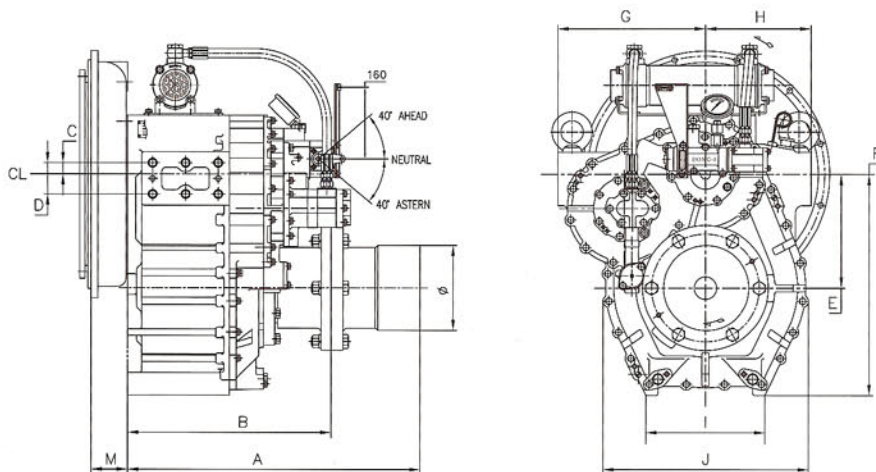
HYDRAULIC COMPACT CLUTCH TYPE
SAME TORQUE IN AHEAD & ASTERN
STANDARD SAE BELL HOUSING WITH COUPLINGS



○ SPECIFICATIONS & CAPACITIES

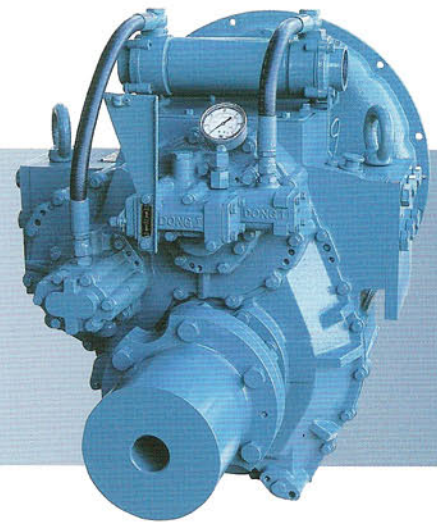
MODEL NAME	Reduction Ratio	Max. Input (rpm)	Max. Input Torque (kgf · m)	Output Capacity (HP)			Dry Weight (kg)	Standard Housing
				1800rpm	2100rpm	2400rpm		
DMT 25AL	1.64, 2.07, 2.52, 2.96, 3.32	3500	30	75	88	101	77	3, 4, 5
DMT 50A	1.61, 2.06, 2.45, 2.82, 3.12, 3.46	3000	55	138	161	184	143	1, 2, 3
DMT 70T	1.61, 2.06, 2.45, 2.82, 3.12, 3.46	3000	87	220	257	293	162	1, 2, 3
DMT 100T	1.61, 2.06, 2.45, 2.82	3000	97	244	285	325	164	1, 2, 3
DMT 100HL	4.07, 4.50, 4.95	3000	89	224	261	298	263	1, 2, 3
	5.29		86	218	254	290		
	5.95		75	190	221	253		
DMT 110A	1.77, 2.09, 2.42, 2.82, 3.19, 3.81	2800	110	276	323	369	212	1, 2, 3
	4.07			130	329	384		
DMT 135HL	4.50	2800	125	315	367	420	293	1, 2, 3
	4.95		115	291	339	388		
DMT 140H	1.97, 2.57, 3.03, 3.46	2800	130	327	381	436	218	1, 2, 3

▶ INSTALLATION DIMENSIONS



MODEL NAME	A	B	C	D	E	F	G	H	I	J	K	Ø
DMT 25AL	341	255	-7.8	26	118.7	244	177	135	157	260	60	72
DMT 50A	382	286	+20	40	160.5	323.5	217	175	170	326	70	100
DMT 70T	436	325	+20	40	160.5	323.5	228	175	170	326	70	110
DMT 100T	471	325	+20	40	160.5	323.5	228	175	170	326	70	120
DMT 100HL	462	351	-124	70	274	563.5	284	284	370	552	120	134
DMT 110A	446	335	-48	40	195	388	249	197	224	386	100	140
DMT 135HL	503.2	351.2	-124	70	274	563.5	284	284	376	552	120	148
DMT 140H	455	344	-15	50	195	388	249	197	224	386	100	140

D-I MARINE TRANSMISSION

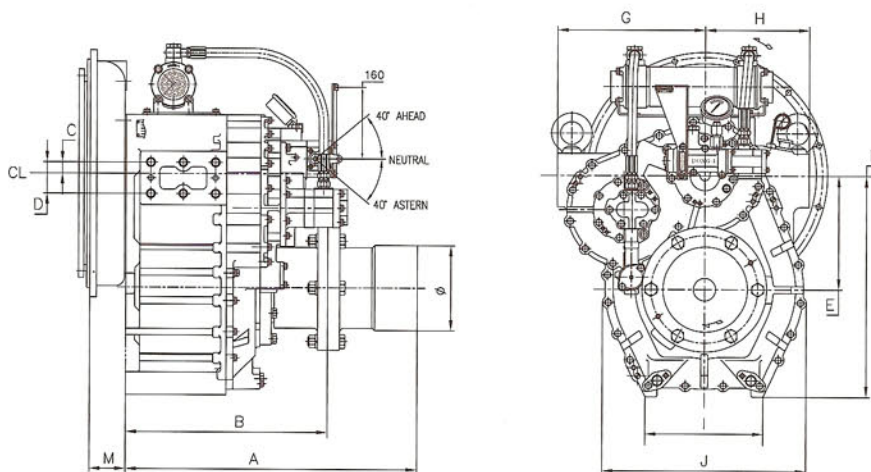


OPTIONS TROLLING VALVE
DUAL STAGE COUPLING
ELECTRONIC SHIFTING VALVES

○ SPECIFICATIONS & CAPACITIES

MODEL NAME	Reduction Ratio	Max. Input (rpm)	Max. Input Torque (kgf · m)	Output Capacity (HP)			Dry Weight (kg)	Standard Housing
				1600rpm	1800rpm	2100rpm		
DMT 150H	1.83, 2.09, 2.51, 3.08, 3.43	2500	168	375	422	493	287	1, 2
DMT 170HL	4.04, 4.48	2500	168	375	422	493	352	1, 2
DMT 180HL	5.15, 5.96	2500	168	375	422	493	475	1, 2
DMT 200H	1.83, 2.09, 2.51, 3.08, 3.43	2500	200	447	503	586	310	1, 2
DMT 200HL	4.04, 4.48	2500	200	447	503	586	370	1, 2
DMT 240H	1.50, 1.97, 2.44, 2.93, 3.40	2500	219	489	550	642	400	1, 2

➤ INSTALLATION DIMENSIONS



MODEL NAME	A	B	C	D	E	F	G	H	I	J	K	∅
DMT 150H	518	378	+10	50	211.2	428	275	210	218	415	134	150
DMT 170HL	580	390	-14.3	70	260.9	530.5	280	258	307	510	134	180
DMT 180HL	617.5	427.5	-216	90	331	667	337	337	416	654	154	180
DMT 200H	590	390	+10	50	211.2	428	275	210	218	415	134	185
DMT 200HL	625	405	-14.3	70	261	530.5	280	258	307	510	134	200
DMT 240H	639	439	+25	70	227	458	330	240	244	447	146	185

HIGH CAPACITY MARINE TRANSMISSION



DMT 260H



DMT 260HL



DMP 400H



DMT 400HL

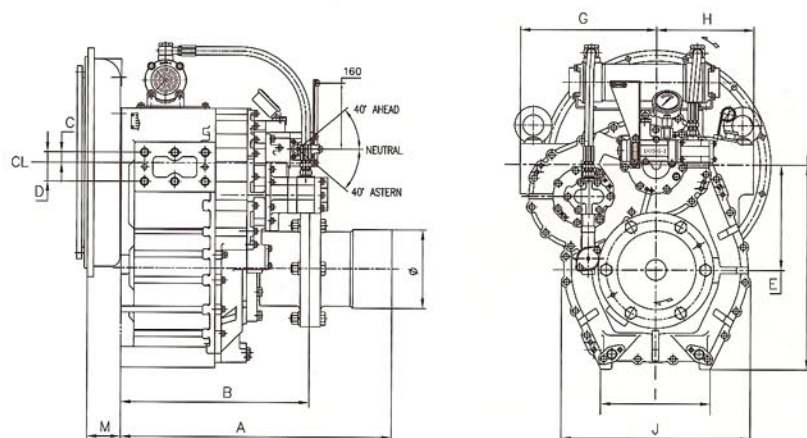


DMT 550HL

○ SPECIFICATIONS & CAPACITIES

MODEL NAME	Reduction Ratio	Max. Input (rpm)	Max. Input Torque (kgf · m)	Output Capacity (HP)			Dry weight (kg)	Standard Housing
				1800rpm	2100rpm	2400rpm		
DMT 260H	2.06, 2.50, 2.92, 3.26	2500	259	578	650	758	490	0, 1
DMT 260HL	3.53, 4.08, 4.52 5.04	2500	259 239	578 553	650 600	758 700	640	0, 1
DMT 280H	2.06, 2.50, 2.92, 3.26	2500	298	667	750	875		
				1400rpm	1600rpm	1800rpm		
DMT 400H	1.43, 1.72, 2.03 2.46 2.75	2300	453 403 354	1,013 902 791	1,140 1,015 890	1,330 1,184 1,038	660	0, 1
DMT 400HL	3.02, 3.28, 3.56, 4.07 4.48, 4.95	2300	453 374	887 731	1013 836	1140 940	750	0, 1
DMT 550H	1.43, 1.72, 2.03 2.46 2.75	2300	557 517 443	1244 1154 989	1400 1300 1115	1633 1515 1298	695	0, 1
DMT 550HL	3.02, 3.28, 3.56, 4.07 4.48 4.95	2300	550 532 479	1075 1041 938	1229 1190 1072	1383 1339 1206	830	0, 1

📏 INSTALLATION DIMENSIONS

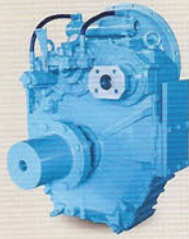


MODEL NAME	A	B	C	D	E	F	G	H	I	J	K	∅
DMT 260H	653.5	453.5	+25	70	254	494	330	235	266	458	146	190
DMT 260HL	673.5	453.5	-216	90	331	677	337	337	417	654	154	200
DMT 280H	653.5	453.5	+25	70	254	494	330	235	266	458	146	190
DMT 400H	705.5	505.5	+35	90	235.9	450	360	360	266	436	160	190
DMT 400HL	781.6	531.6	-207.5	200	357.5	698	360	360	368	641	170	220
DMT 550H	725.5	525.5	+35	90	235.9	450	360	360	266	436	160	190
DMT 550HL	801.6	551.6	-207	200	357.5	698	360	360	368	641	170	220

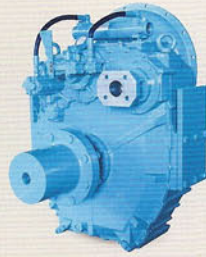
MARINE TRANSMISSION with LIVE PTO



DMTP 5100



DMTP 6500



DMTP 7500



DMTP 400H/HL

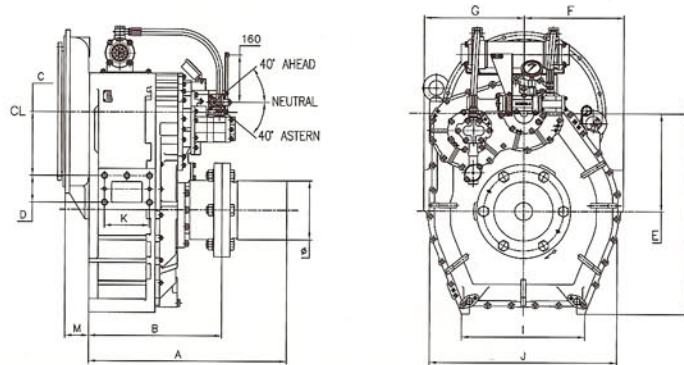


DMTP 550H/HL

○ SPECIFICATIONS & CAPACITIES

MODEL NAME	Reduction Ratio	Max. Input (rpm)	Max. Input Torque (kgf · m)	Output Capacity (HP)			Live PTO Torque (kgf · m)	Dry weight (kg)	Standard Housing
				1600rpm	1800rpm	2100rpm			
DMTP 5100	1.47, 1.76, 1.93	2500	168	375	422	493		270	1, 2, 3
	2.48, 3.08		150	335	377	440			
	3.46		130	290	326	381			
DMTP 6500	5.11, 5.62, 5.91	2400	259	578	650	758		850	0, 1
	6.57, 6.95		239	533	600	700			
DMTP 7500	3.56	2300	298	666	750	875		700	0, 1
	4.13		292	653	735	857			
	4.59		286	640	720	840			
DMT 400H	1.43, 1.72, 2.03	2300	453	1,013	1,140	1,330		660	0, 1
	2.46		403	902	1,015	1,184			
	2.75		354	791	890	1,038			
DMT 550H	1.43, 1.72, 2.03	2300	557	1244	1400	1633		695	0, 1
	2.46		517	1154	1300	1515			
	2.75		443	989	1115	1298			
				1400rpm	1600rpm	1800rpm			
DMT 400HL	3.02, 3.28, 3.56, 4.07	2300	453	887	1013	1140		750	0, 1
	4.48, 4.95		374	731	836	940			
DMT 550HL	3.02, 3.28, 3.56, 4.07	2300	550	1075	1229	1383		830	0, 1
	4.48		532	1041	1190	1339			
	4.95		479	938	1072	1206			

➔ INSTALLATION DIMENSIONS

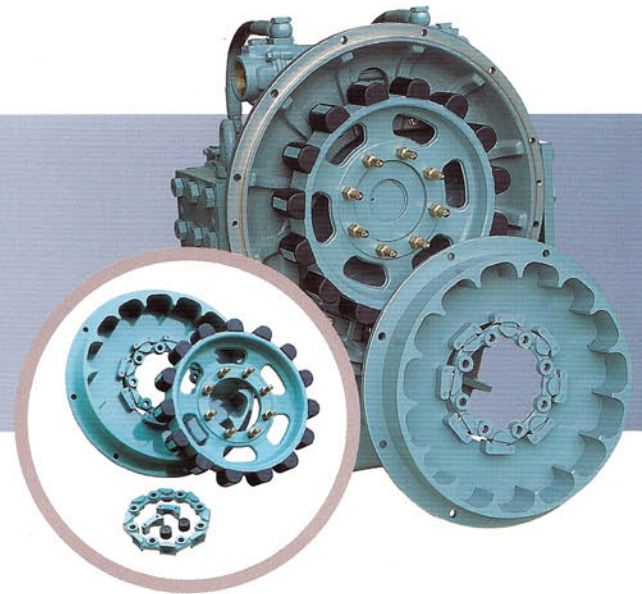


MODEL NAME	A	B	C	D	E	F	G	H	I	J	K	L	M	Ø
DMTP5100	531.3	391.3	-15	50	195	390	270	250	206	383	100	133	-23.4	150
DMTP6500	777	527	-290	200	415	842	440	440	448	756.2	200	282	-53	220
DMTP7500	683	463	-219	200	319	634	330	330	435.8	616	160	254.8	16.3	200
DMT 400H	705.5	505.5	+35	90	235.9	450	360	360	266	436	160	233.4	23.2	190
DMT 400HL	781.6	531.6	-207.5	200	357.5	698	360	360	368	641	170	233.4	23.2	220
DMT 550HL	801.6	551.6	-207	200	357.5	698	360	360	368	641	170	233.4	23.2	220

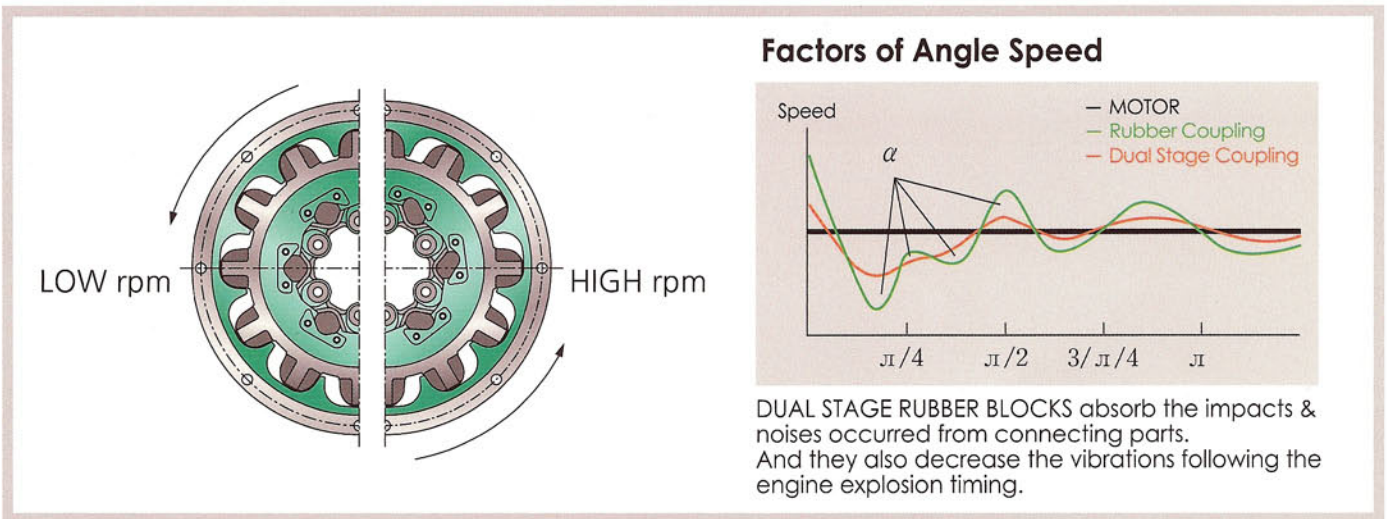
OPTIONS

DUAL STAGE COUPLING

reduce noise AND VIBRATION
11.5", 14" FLYWHEEL AVAILABLE



The Dual Stage Coupling has 2 kind of rubber blocks to reduce noise and vibration in different rpm section. Inner blocks transmit power in low rpm section and outer blocks transmit power in high rpm (over 1000rpm) section



HIGH FLEXIBLE COUPLING with Torque limits

HC4000, HC5000, HC8000

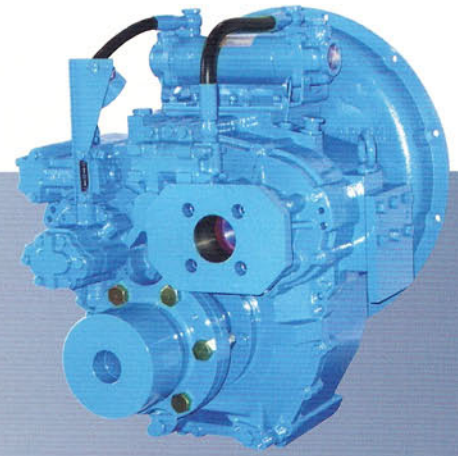


Reduce and absorb vibration torques from Engine operation and impact torque in clutch shifting. Protect propulsion shaft with system.

With Torque Limit application, even when the rubber parts are damaged, emergency power transmissions are available.

Coupling Model	Size	Nominal Torque	Permissible Power Loss	Permissible Speed	Dynamic T Stiffness	Relative Damping
HC4000	14"	8 kN.m	0.762 kw	2500 rpm	29 kN.m/rad	1.88 ψ
HC5000	14"	10 kN.m	0.726 kw	2500 rpm	40 kN.m/rad	2.68 ψ
HC8000	18"	12 kN.m	0.555 Kw	2500 rpm	67 kN.m/rad	1.33 ψ

D-I MARINE TRANSMISSION



HIGHER OUTPUT SPEED continuous duty
FOR WATER JET,
 PUMP DRIVE APPLICATIONS

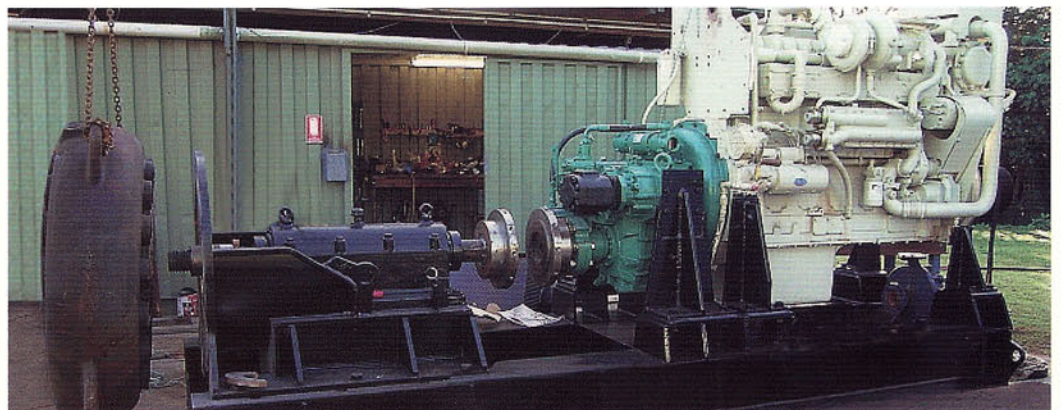
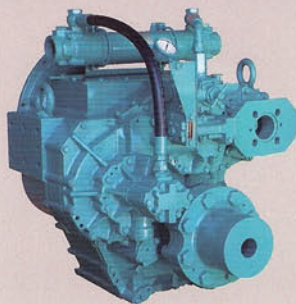
○ SPECIFICATIONS & CAPACITIES

MODEL NAME	Reduction Ratio	Reduction Ratio	Max. Input (rpm)	Max. Input Torque (kgf · m)	Output Capacity (HP)			Standard Housing
					1800rpm	2100rpm	2400rpm	
DMT 140P	AHEAD	1.47	2800	130	322	375	429	1, 2, 3
	ASTERN	1.47	2800	35	86	101	115	
DMT 5100P	AHEAD	1.25	2500	167	422	490	536	1, 2, 3
	ASTERN	1.25	2500	36	88	103	112	
DMT 240P	AHEAD	1.25	2500	260	653	762	833	0, 1
	ASTERN	1.25	2500	50	126	147	161	
DMP 400P	AHEAD	1.25	2500	453	1,138	1,328	1,518	0, 1
	ASTERN	1.25	2500	90	226	263	301	

※ Different torque and capacity in ahead and astern function.
 Ahead and Astern clutches can be exchanged each other for twin propulsion system.
 Dimension data for installation is as same as each **DMTP 5100, DMT 240H, DMT 400H**

➡ PUMP DIRVING APPLICATION

DMT 400P



Apply to drive Water Jet, Dredging pump, Fire fighting pump and other industrial equipments

DMT 240P

